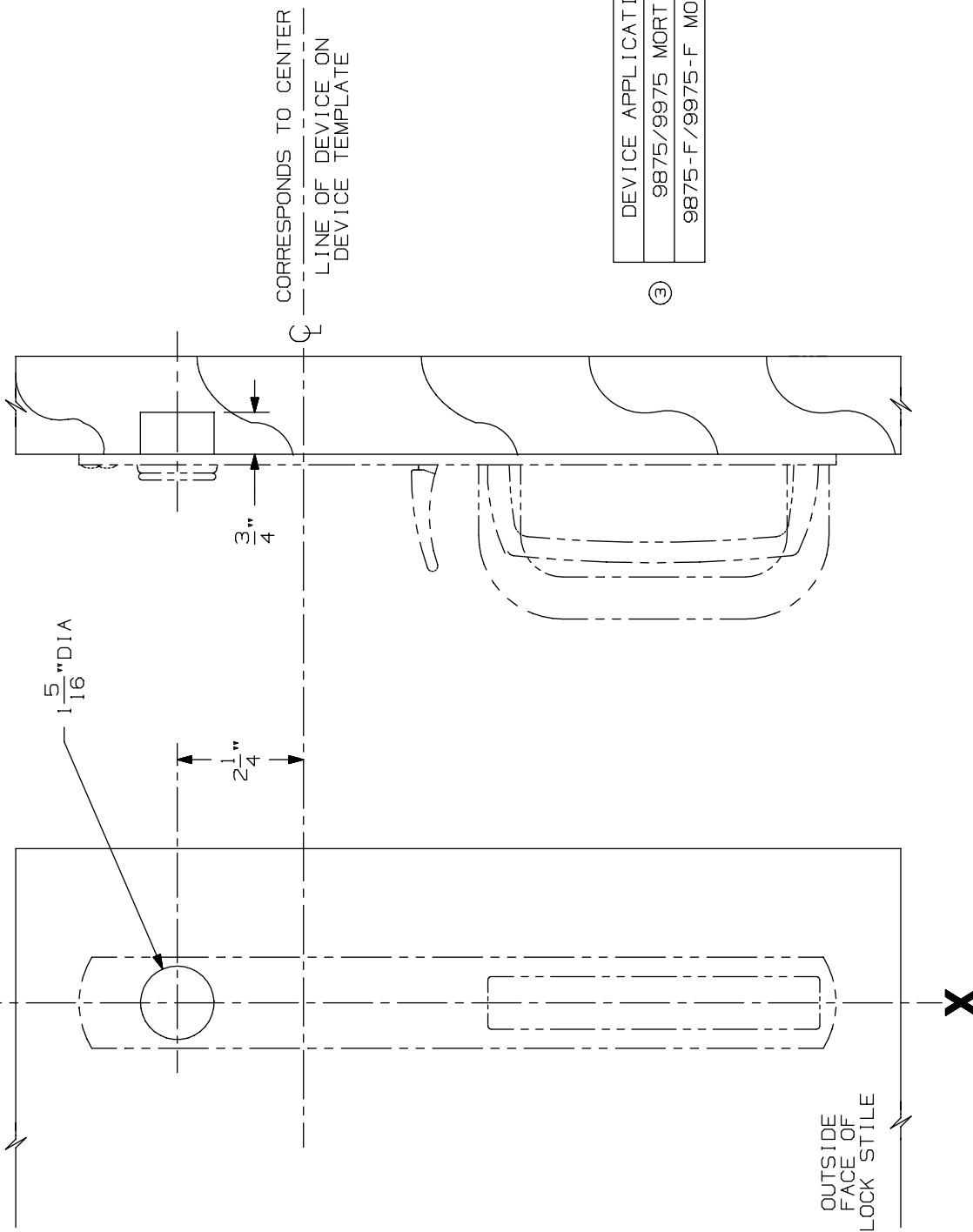


LINE X-X CORRESPONDS TO  
LINE X-X ON DEVICE TEMPLATE



DEVICE APPLICATION SCHEDULE
9875/9975 MORTISE DEVICE
9875-F/9975-F MORTISE DEVICE

③

LHR SHOWN  
RHR OPPOSITE

FOR CUTOUTS ON INSIDE FACE OF DOOR  
SEE DEVICE TEMPLATE.

NOTE: MOUNTING HOLES TO BE PREPARED  
AT INSTALLATION ON DOOR.

696NL & 697NL Trim  
(Wood Door)

**VON DUPRIN**®

NOTES: SEE MASTER SHEET #10001 FOR SUGGESTED REINFORCING

TEMPLATE  
NUMBER:

W20104\_a

DATE:  
05-29-13