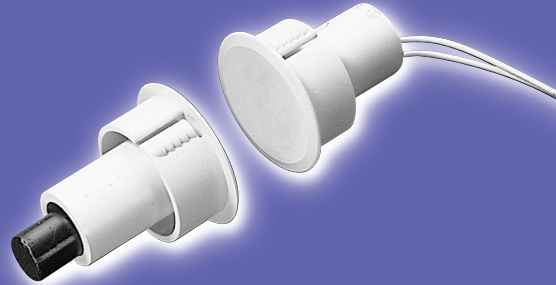




## GE Magnetic Contacts

### 1078 Series 1" Diameter Steel Door



<b>Gap Distance</b>		<b>Closed Loop</b>	<b>SPDT</b>
<i>In Steel</i>	<i>In Wood</i>		
Up to 1/2"	1"	1078	1076
Up to 1"	2"	1078W	1076W
Up to 3/8"	3/4"		1076D DPDT <i>(no Canadian listing)</i>

<b>Color</b>	Natural, Mahogany, Grey
<b>Quantity</b>	10

100% **TESTED**



604S  
Connectors and Switches

1078-M



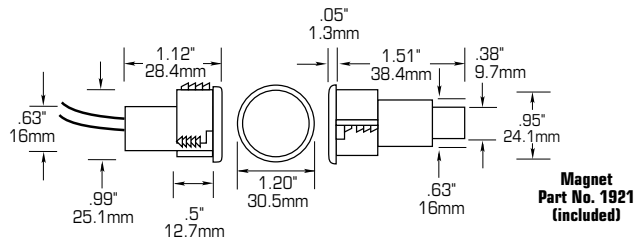
0 46188 01541 2

## 1078 Series

### 1" Diameter Steel Door with Wire Leads

#### Installation Instructions

1. Drill appropriate diameter and depth holes for contact and magnet for contact (1" x 1<sup>1</sup>/<sub>8</sub>" for contact and 1" x 1<sup>1</sup>/<sub>2</sub>" for magnet).
2. Connect contact leads to security system loop and test for continuity.
3. Lightly coat the contact and magnet with RTV mounting compound (part number 1905) and insert into respective holes.



#### UL Specifications

Part Number	Loop Type	Electrical Configuration	Gap Distance	
			In Steel	In Wood
1076	Open or Closed	SPDT	Up to 1/2"	1"
1076W	Open or Closed	SPDT	Up to 1"	2"
1076D (no Canadian listing)	Open or Closed	DPDT	Up to 3/8"	3/4"
1078	Closed	N/O	Up to 1/2"	1"
1078W	Closed	N/O	Up to 1"	2"

#### \*\* FORM A (1078, 1078W)

Voltage: 100V AC/DC max  
Current: 0.5A max  
Power: 7.5W max

#### FORM C (1076, 1076W)

Voltage: 30V AC/DC max  
Current: 0.25A max  
Power: 3.0W max

\* Gap specifications are nominal and may vary  $\pm 20\%$ . Gap specifications are for switch to make. Break distance is approximately 1.1 to 1.5 times make.

\*\* European Union Specifications: 48V AC/DC max., 0.5 Amp

WARNING: Each electrical rating is an individual maximum and cannot be exceeded!

#### C-UL Specifications

All Contacts: 30V DC, 50 mA max

Gap Specifications:\*

See UL Gap Specifications



GE Interlogix

www.GE-Interlogix.com

12345 SW Leveton Drive  
Tualatin, OR 97062  
Phone: 503-692-4052  
USA & Canada: 800-547-2556  
Technical Service: 800-648-7424  
Faxback: 800-483-2495

2266 Second Street North  
North St. Paul, MN 55109  
Phone: 651-777-2690  
USA & Canada: 800-777-5484  
Technical Service: 800-777-2624

1040683 Rev A 01/03

Made in Taiwan