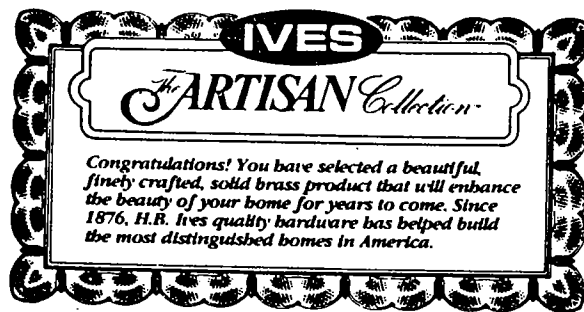


888-371-7331



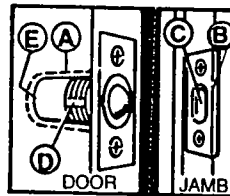
**BALL CATCH**

FOR USE ON INTERIOR DOORS. INSTALLS IN DOOR. FEATURES DUAL ADJUSTMENT FOR DOOR CLEARANCE AND HOLDING STRENGTH.

**INSTALLATION INSTRUCTIONS**

TOOLS REQUIRED: Drill, 1/8" drill bit, 1/4" spade bit, chisel, hammer, Phillips screwdriver and pencil.

1. Position catch in center of door edge, approximately 39" from bottom of door. Mark and drill 1/4" diameter hole 1/2" deep (A).
2. Position catch in hole -- mark screw holes and shape of plate. Remove catch. Drill for screws and chisel plate area 1/16" deep. Secure with screws provided.
3. Locate strike on jamb as shown in (B) to align with ball catch (curved edge facing out). Mark screw holes and shape of strike.
4. Drill for screws and chisel strike area 1/16" deep. Mortise inverted catch section (C) of strike 1/4" deep. Secure with screws provided.
5. Adjust ball clearance (if necessary) by turning threaded area (D).
6. Adjust ball tension (if necessary) by turning slotted nut at point (E).



**MAINTENANCE INSTRUCTIONS**

H.B. Ives Solid Brass products have a clear, protective lacquer coating which helps prevent discoloration. Do not use abrasive waxes or cleaners.

**ASK FOR OTHER FINE DECORATIVE HARDWARE BY H.B. IVES**



WINDOW LOCKS



DOOR STOPS



COAT & HAT HOOKS



DOOR BOLTS



BALL CATCH C347B3 BRT